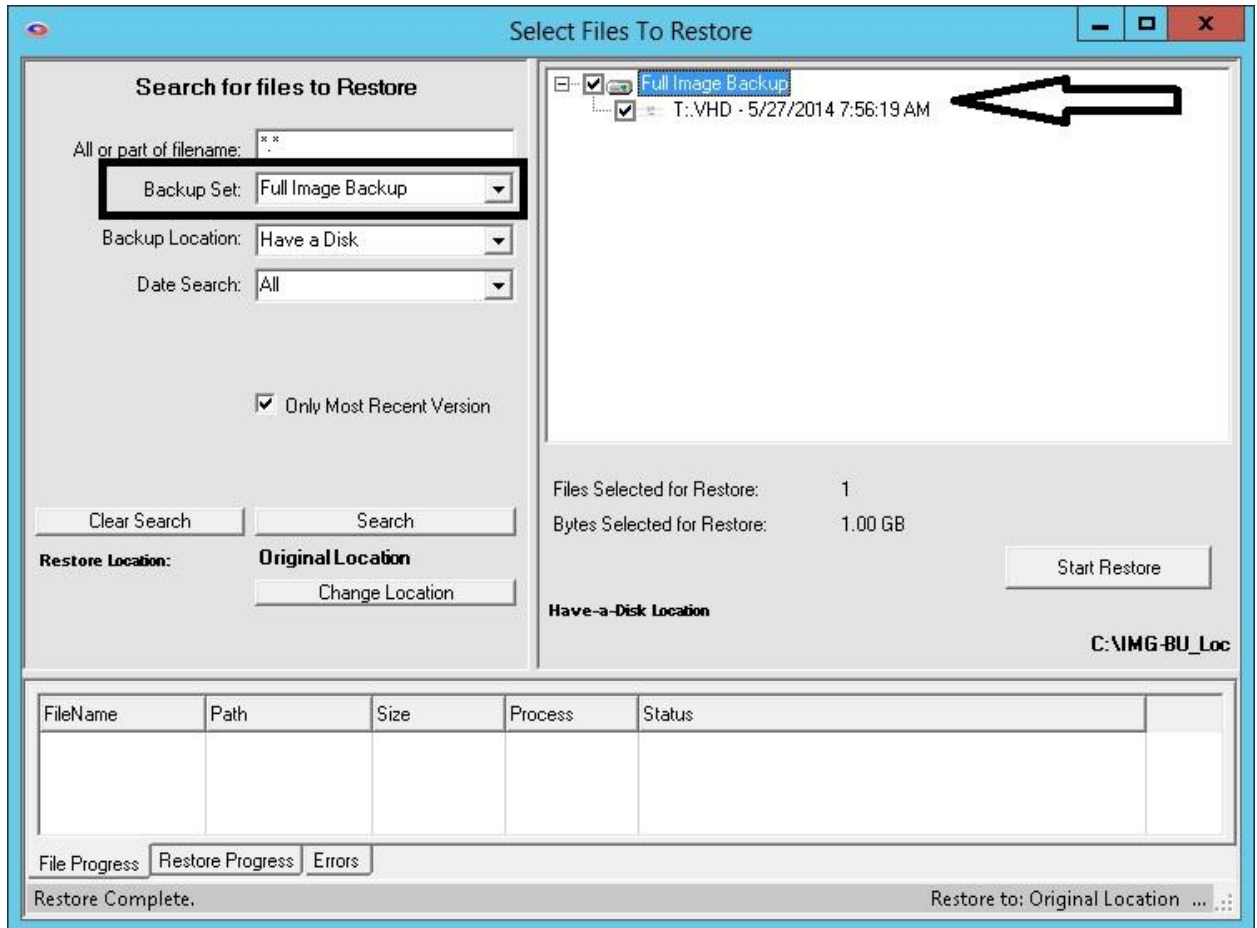
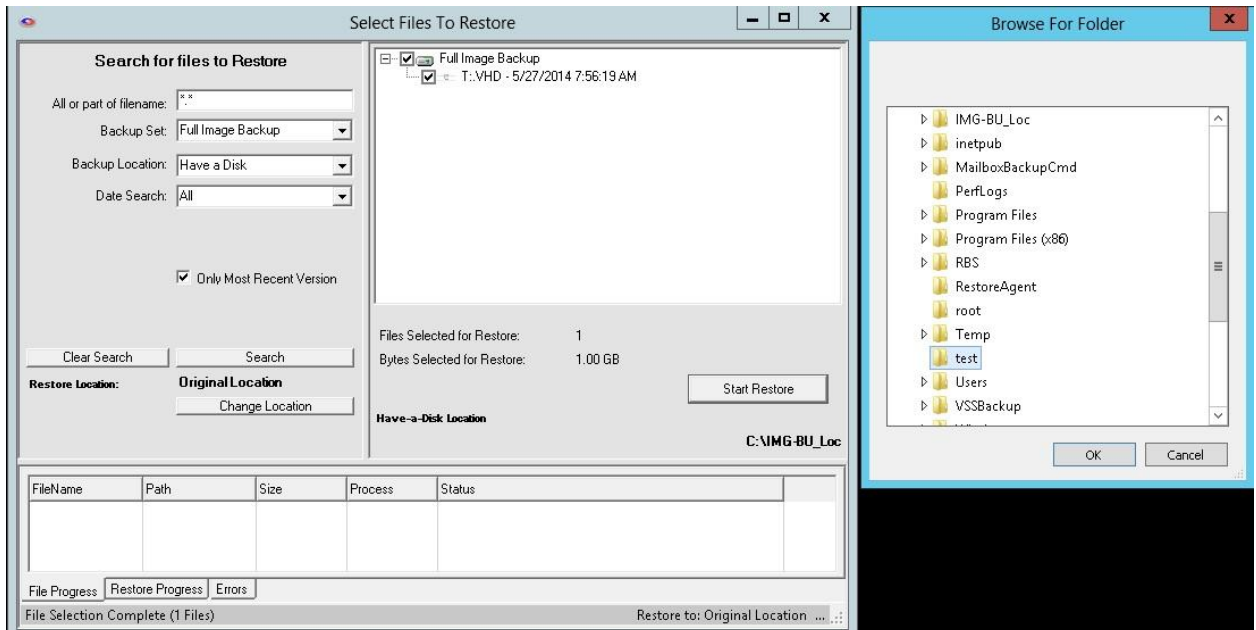
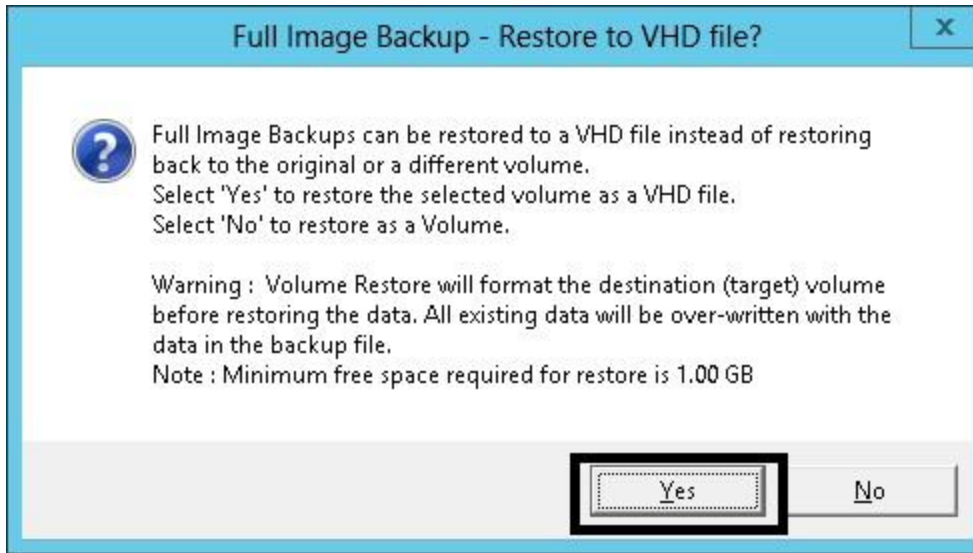
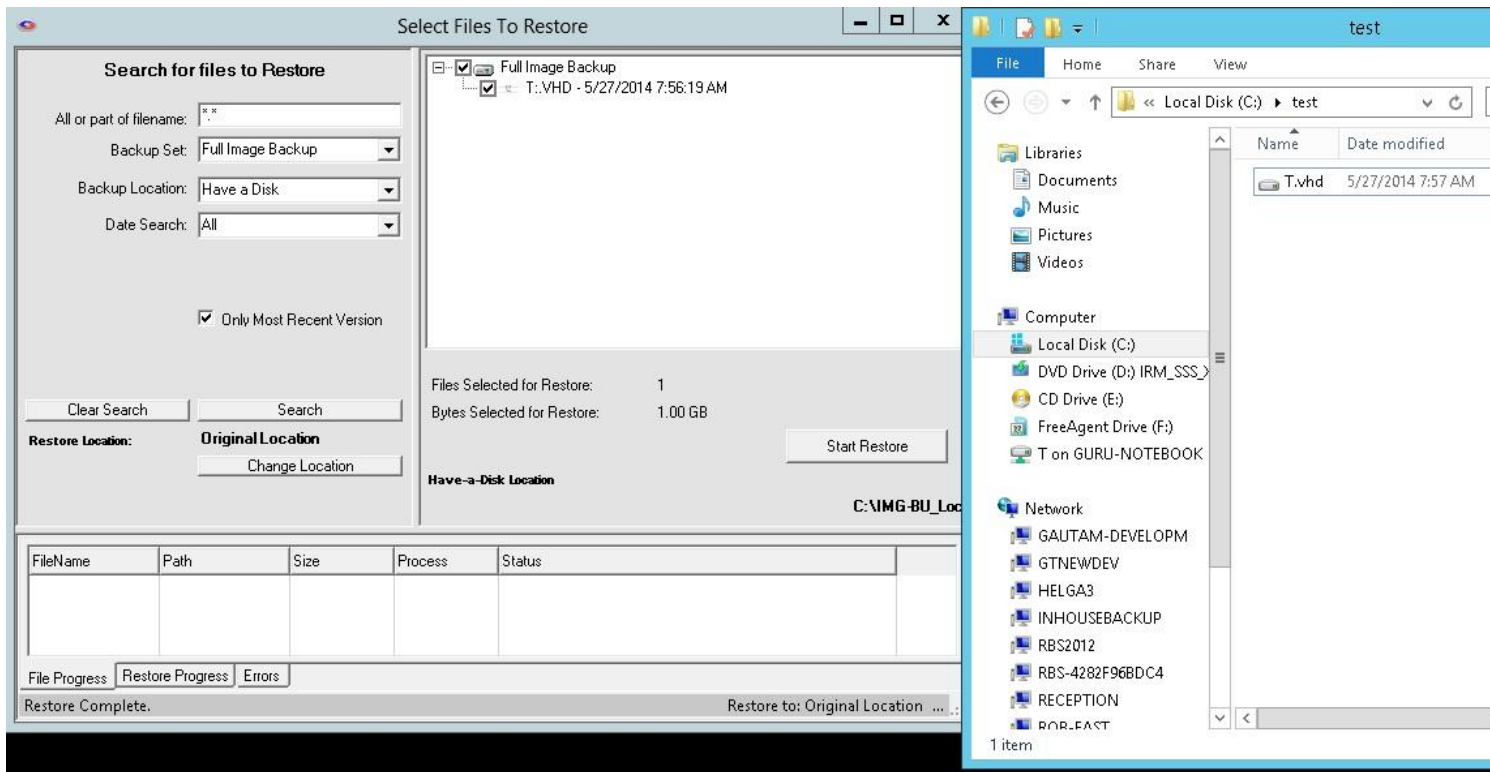


Restore Procedures for Full Image Backup

A.) Restore as VHD and mount volume







B.) Restore as VHD and attach to a Virtual Machine

Use the above procedure to restore the file in .VHD format and follow the step below to attach it to the Hyper-V.

Settings for Server 2008_SystemState-Shawn on RBS2012

Server 2008_SystemState-Shawn

Hardware

- Add Hardware
 - BIOS
 - Boot from CD
 - Memory
 - 4096 MB
 - Processor
 - 1 Virtual processor
 - IDE Controller 0
 - Hard Drive
 - Server 2008_SystemState-...
 - IDE Controller 1
 - DVD Drive
 - 7601.17514.101119-1850...
 - SCSI Controller
 - Hard Drive
 - T.vhd
 - SCSI Controller
 - Network Adapter
 - Broadcom BCM5708C NetXtrem...
 - COM 1
 - None
 - COM 2
 - None
 - Diskette Drive
 - None
- ## Management
- Name
 - Server 2008_SystemState-Shawn
 - Integration Services
 - All services offered
 - Snapshot File Location
 - F:\yms\WinServer2008 R2-Sha...
 - Smart Paging File Location

Hard Drive

You can change how this virtual hard disk is attached to the virtual machine. If an operating system is installed on this disk, changing the attachment might prevent the virtual machine from starting.

Controller: SCSI Controller Location: 0 (in use)

Media

You can compact or convert a virtual hard disk by editing the associated file. Specify the full path to the file.

Virtual hard disk:
C:\test\T.vhd

New Edit Inspect Browse...

Physical hard disk:
[Dropdown]

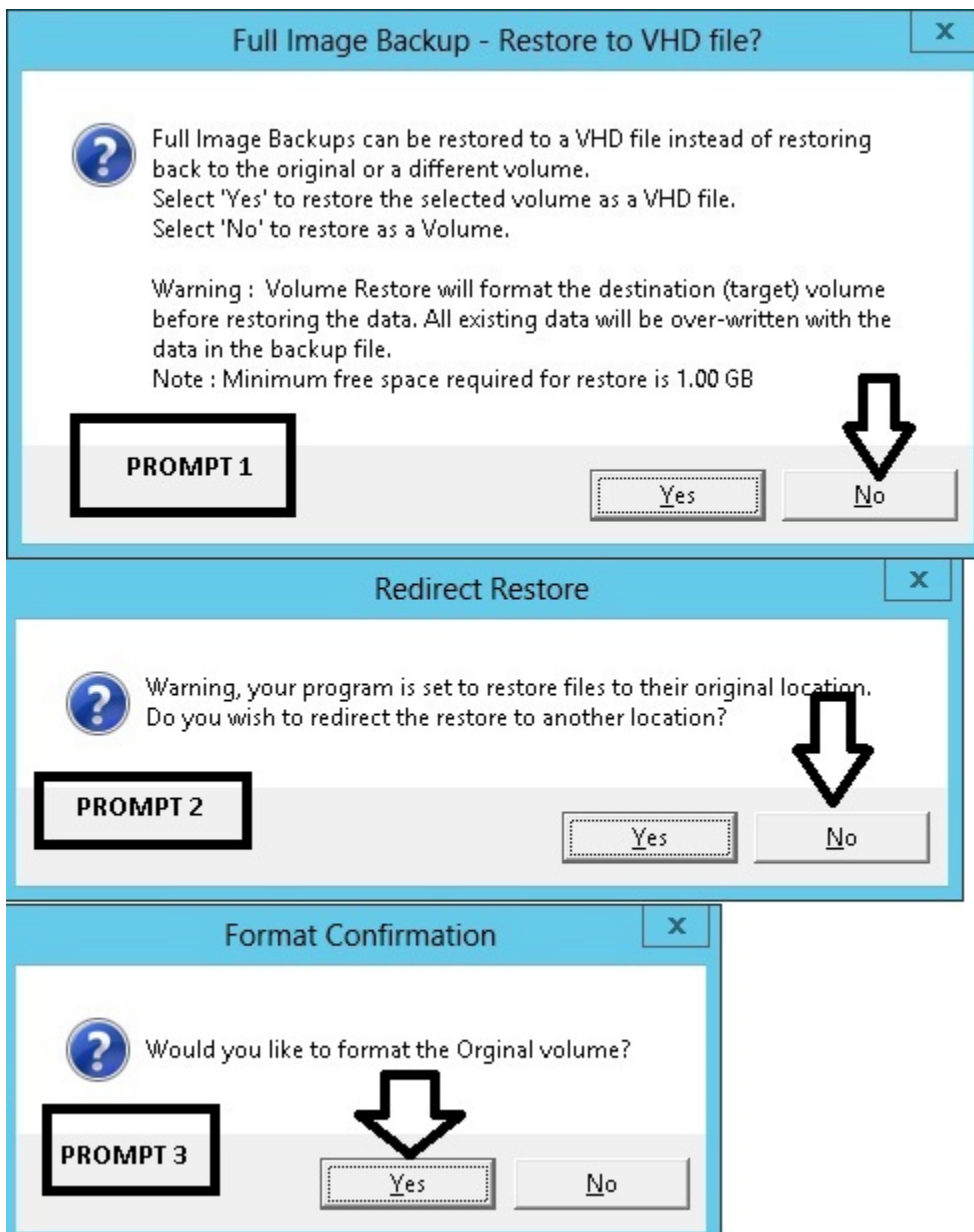
i If the physical hard disk you want to use is not listed, make sure that the disk is offline. Use Disk Management on the physical computer to manage physical hard disks.

To remove the virtual hard disk, click Remove. This disconnects the disk but does not delete the associated file.

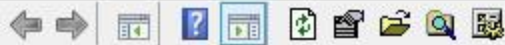
Remove

OK Cancel Apply

C.) Restore as native files to their original locations



File Action View Help



Volume	Layout	Type	File System	Status	Capacity	Free Spa...	% Free
(C:)	Simple	Basic	NTFS	Healthy (S...	272.25 GB	136.82 GB	50%
BMR Test (G:)	Simple	Basic	NTFS	Healthy (P...	1023 MB	400 MB	39%
FreeAgent Drive (F:)	Simple	Basic	NTFS	Healthy (A...	931.51 GB	160.82 GB	17%
IRM_SSS_X64FRE_E...	Simple	Basic	UDF	Healthy (P...	3.98 GB	0 MB	0%

Disk 0

Basic
272.25 GB
Online

(C:)
272.25 GB NTFS
Healthy (System, Boot, Page File, Active, Crash Dump, Primary Partition)

Disk 1

Basic
931.51 GB
Online

FreeAgent Drive (F:)
931.51 GB NTFS
Healthy (Active, Primary Partition)

Disk 2

Basic
1023 MB
Online

BMR Test (G:)
1023 MB NTFS
Healthy (Primary Partition)

CD-ROM 0

DVD
3.98 GB
Online

IRM_SSS_X64FRE_EN-US_DV5 (D:)
3.98 GB UDF
Healthy (Primary Partition)

■ Unallocated ■ Primary partition



D.) Restore as native files to a redirected location

